

ANSI/HI Pump Standards

Version 2.0

CD-ROM
Installation and
Instruction Guide



www.pumps.org



Pre-Installation Instructions

The electronic version of ANSI/HI Pump Standards requires the use of Adobe® Reader® version 5.0 or higher. To use all available functionality when viewing the Standards, Adobe Reader 7.0 or higher is recommended. You can download this free software by visiting www.adobe.com, clicking on the “Get Adobe Reader” link, and following the installation instructions.

After you have finished installing Adobe Reader, follow the instructions in this guide to install and authorize your copy of the ANSI/HI Pump Standards.

It is strongly recommended that you close all other applications before proceeding with the installation.

How to Install the ANSI/HI Pump Standards Version 2.0

The files on this CD-ROM have been encrypted to prevent unauthorized use. Decryption of the files takes place during the authorization of the Standards on your hard drive. For more information about our use of encryption, please read “Why are the HI Standards Encrypted?”, on page 20.

To decrypt the files, you will need your 10-character alphanumeric Order ID, printed on the sticker affixed to the CD-ROM jacket.

*You may use the same Order ID if you want to install the Standards for your own use on a second portable device, such as a laptop computer. It is not our intent that you use the Order ID a second time to provide a copy of the Standards to another user. **Your license agreement specifically denotes you as the sole authorized user of this product.***

1. **Please note:** Installation and authorization of the standards is specific to a single machine and login. If there are multiple users of the workstation on which the standards are installed, be sure to login to the designated userid/password when installing and accessing the standards. If you do not have administrative privileges on your computer, **Step A.** and **Step B.**, described below, may be completed by your administrator but **Step C.**, which does not require administrative privileges, must be completed while logged in as the user who will access the standards.
2. If your computer is not connected to the Internet, please connect now before beginning the installation.

The installation software requires Internet access to complete the installation and decryption of the ANSI/HI Pump Standards Version 2.0.

3. Place the CD-ROM in your CD drive. Installation will begin automatically in a few seconds.

If installation does not begin automatically, use Windows

*Explorer to navigate to the root directory of the CD-ROM and double-click the file named **AUTORUN . EXE**.*

4. The installation software displays the Welcome screen which outlines the 3-step installation process.

Welcome to the ANSI/HI Pump Standards Version 2

Note: Adobe® Reader® **MUST** be installed before continuing.
Visit www.adobe.com to download and install this free software.
Adobe Reader version 5*, 6, or 7 will work. Version 7 is recommended.

Return to this installation when Adobe Reader is installed.

- Step A. Install the FileOpen plug-in. †**
- Step B. Install the ANSI/HI Pump Standards Version 2†**
- Step C. Authorize your copy of the ANSI/HI Pump Standards**
Order ID and Internet connection are required.†

* Adobe Reader 5 will not be able to use the searchable index.

† Refer to **User Installation and Instruction Guide** for more information.

www.pumps.org



Hydraulic
INSTITUTE
Creating Pump Standards Since 1917



Exit

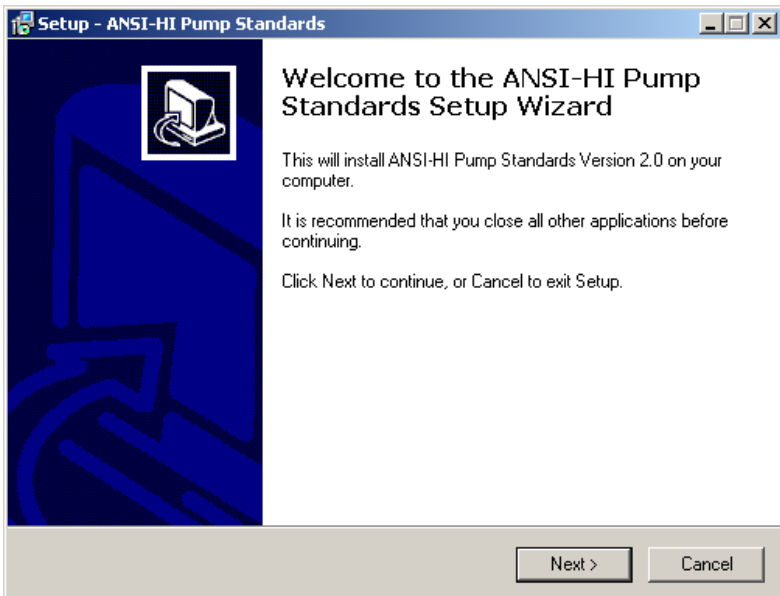
You must successfully complete all 3 steps – A, B, and C – before you will be able to view the Standards on your computer.

5. Click on the link to **Step A.** to install the FileOpen plug-in which will enable you to authorize and view the decrypted Standards once the installation is complete. Please note that you must complete this step even if you have installed an earlier release of the ANSI/HI Pump Standards. This is the most recent version of the plug-in and is required by the Version 2.0 release.

The pop-up shown below will indicate that the plug-in has been installed successfully. Click **OK** to close the pop-up window. If you do not receive this successful completion message refer to the Troubleshooting section on page 21.

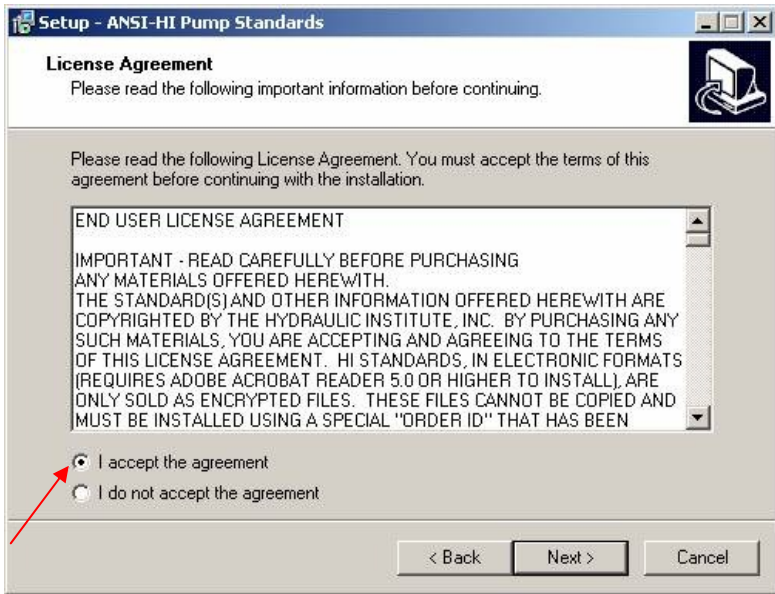


6. Returning to the Welcome screen, click on the link to **Step B.** to initiate the Setup Wizard which will install the encrypted ANSI/HI Pump Standards on your computer.



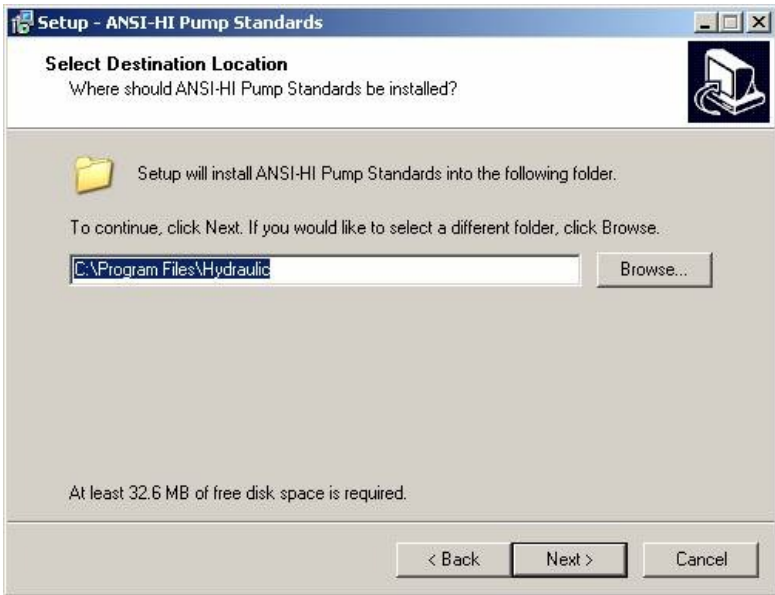
*Verify that you have closed all other applications and click **Next** to proceed.*

7. Read the End User License Agreement and select the radio button to indicate your acceptance.



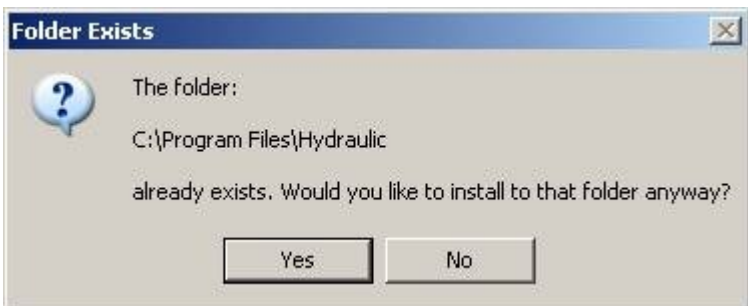
*Note that you must accept the terms of the License Agreement in order to continue with the installation. Click **Next** to continue.*

8. The Setup Wizard displays the location on your hard drive where the ANSI/HI Pump Standards Version 2.0 will be installed.



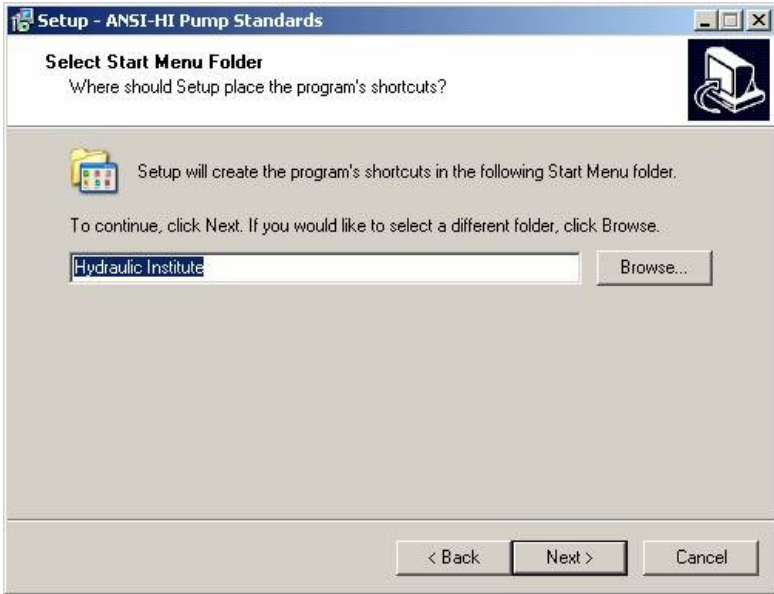
*You must have sufficient free disk space on your system in order to successfully install the Standards. Click the **Next** button to accept the default location (recommended), or type a different location in the text box and click **Next**.*

9. If you have an earlier version of the Standards and choose to accept the default location for installation, you may be prompted with the following dialog box:



*Click **Yes** to continue with the installation.*

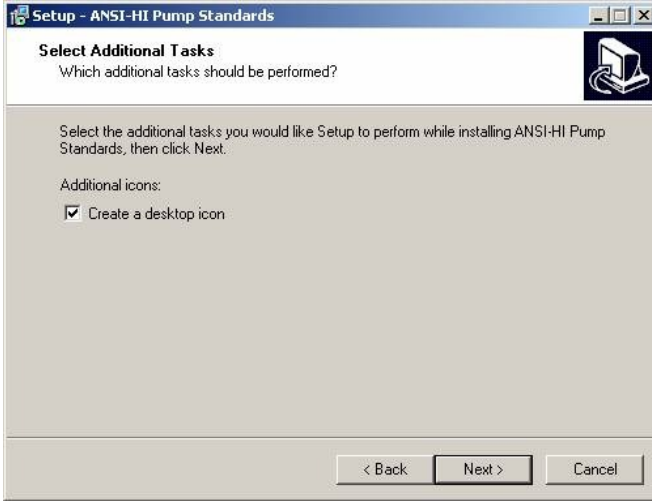
10. The Setup Wizard displays the folder location in your Start Menu where the shortcut to the ANSI/HI Pump Standards Version 2.0 will be placed.



Click the **Next** button to accept this location (recommended), or type a different location in the text box and click **Next**.

11. The Setup Wizard gives you the option of creating a desktop shortcut, as shown below, to the ANSI/HI Pump Standards.





*Click the checkbox and click **Next** to accept the shortcut or leave the selection box unchecked then click **Next** to continue.*

12. Setup provides a screen, similar to the one shown below, which summarizes your installation selections.



*Click **Install** to begin the installation or **Back** to make changes.*

13. Setup will proceed with the actual installation and will display the following successful completion screen when done.



Click **Finish** to exit the Setup Wizard and return to the Welcome screen.

14. Click on the link to **Step C.** to authorize and decrypt your copy of the ANSI/HI Pump Standards. You will need to provide the 10-character alphanumeric Order ID exactly as it is printed on the sticker affixed to the CD jacket. The authorization window also requests your e-mail address. You must be logged in with the login and password of the user who will access the standards and must be connected to the Internet in order to successfully complete this step. The installation software will launch your copy of Adobe Reader and display the authorization window.

